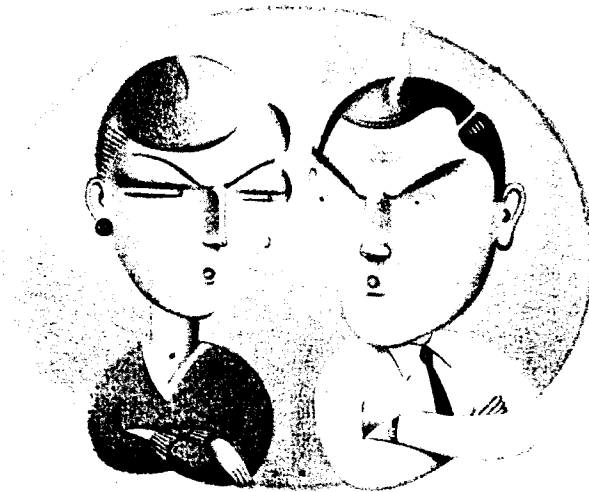


On Hostile Ground

*DO YOU HAVE FEELINGS OF HOSTILITY TOWARD THE OPPOSITE SEX?
TO FIND OUT, AND FIND OUT WHAT IT MEANS, TAKE OUR HOSTILITY TEST.*



*BY JAMES V. P. CHECK, NEIL M. MALAMUTH,
BARBARA ELIAS AND SUSAN A. BARTON*

Yes, there does seem to be a war between the sexes. In our research on sexual aggression, it has become readily apparent that a good deal of hostility exists between men and women. In a recent study of 305 college men at the University of Manitoba, for example, we found that more than one-third basically agreed with the statement, "Women are usually sweet until they've caught a man, but then they let their true self show." And the hostility is not all one-sided. Almost 40 percent of a sample of 278 college women agreed with the statement, "A lot of men talk big, but when it comes down to it, they can't perform well sexually."

Given the implications of these state-

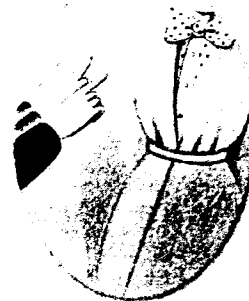
ments (taken from the Adversarial Sexual Beliefs scale developed by our colleague Martha Burt at the Urban Institute in Washington, D.C.), we decided to investigate hostility between the sexes and developed scales to help us measure it in both sexes.

How hostile are you toward members of the opposite sex? To find out, complete the appropriate scale on the following pages. Carefully read each statement in the sex-appropriate scale and circle "T" (true) if it applies to you or if you agree with it. Circle "F" (false) if the statement does not apply to you or if you disagree with it. A self-scoring key and an indication of what your score means follow, with a discussion of what we are learning about hostility between the sexes.

ILLUSTRATIONS BY DAVE CALVER

HOSTILITY TOWARD WOMEN

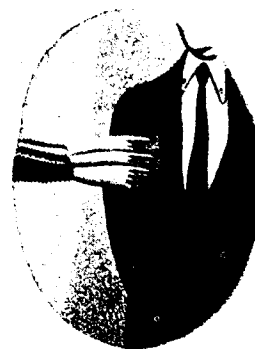
To be Completed by Men



- | | | | | |
|---------------------------------------------------------------------------------------------------------|---|---|--------------------------------------------------------------------------------------------------------------|-----|
| 1. I feel that many times women flirt with men just to tease them or hurt them. | T | F | | |
| 2. I feel upset even by slight criticism by a woman. | T | F | | |
| 3. It doesn't really bother me when women tease me about my faults. | T | F | | |
| 4. I used to think that most women told the truth but now I know otherwise. | T | F | | |
| 5. I do not believe that women will walk all over you if you aren't willing to fight. | T | F | | |
| 6. I do not often find myself disagreeing with women. | T | F | | |
| 7. I do very few things to women that make me feel remorseful afterward. | T | F | | |
| 8. I rarely become suspicious with women who are friendlier than I expected. | T | F | | |
| 9. There are a number of women who seem to dislike me very much. | T | F | | |
| 10. I don't agree that women always seem to get the breaks. | T | F | | |
| 11. I don't seem to get what's coming to me in my relationships with women. | T | F | | |
| 12. I generally don't get really angry when a woman makes fun of me. | T | F | | |
| 13. Women irritate me a great deal more than they are aware of. | T | F | | |
| 14. If I let women see the way I feel, they would probably consider me a hard person to get along with. | T | F | | |
| 15. Lately, I've been kind of grouchy with women. | T | F | | |
| 16. I think that most women would not lie to get ahead. | T | F | | |
| | | | 17. It is safer not to trust women. | T F |
| | | | 18. When it really comes down to it, a lot of women are deceitful. | T F |
| | | | 19. I am not easily angered by a woman. | T F |
| | | | 20. I often feel that women probably think I have not lived the right kind of life. | T F |
| | | | 21. I never have hostile feelings that make me feel ashamed of myself later. | T F |
| | | | 22. Many times a woman appears to care but just wants to use you. | T F |
| | | | 23. I am sure I get a raw deal from the women in my life. | T F |
| | | | 24. I don't usually wonder what hidden reason a woman may have for doing something nice for me. | T F |
| | | | 25. If women had not had it in for me, I would have been more successful in my personal relations with them. | T F |
| | | | 26. I never have the feeling that women laugh about me. | T F |
| | | | 27. Very few women talk about me behind my back. | T F |
| | | | 28. When I look back at what's happened to me, I don't feel at all resentful toward the women in my life. | T F |
| | | | 29. I never sulk when a woman makes me angry. | T F |
| | | | 30. I have been rejected by too many women in my life. | T F |

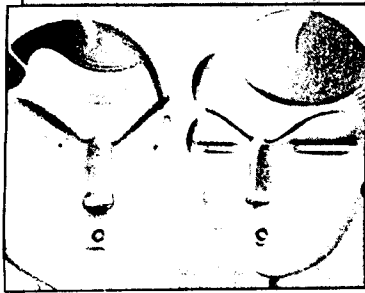
HOSTILITY TOWARD MEN

To be Completed by Women



- | | | |
|----------------------------------------------------------------------------------------------------------------------------------------|---|---|
| 1. Sometimes men bother me by just being around. | T | F |
| 2. At times I have a strong urge to do something harmful to a man. | T | F |
| 3. Lately, I've been kind of grouchy with men. | T | F |
| 4. I think that most men would lie to get ahead. | T | F |
| 5. It is safer not to trust men. | T | F |
| 6. When it really comes down to it, a lot of men are deceitful. | T | F |
| 7. Men are responsible for most of my troubles. | T | F |
| 8. I think nearly any man would lie to keep out of trouble. | T | F |
| 9. I do not blame a woman for taking advantage of a man who lays himself open to it. | T | F |
| 10. I used to think that most men told the truth, but now I know otherwise. | T | F |
| 11. If you aren't willing to fight, men will walk all over you. | T | F |
| 12. Many times a man appears to care, but really just wants to use you. | T | F |
| 13. Men today don't deserve the breaks they get. | T | F |
| 14. I can easily make a man afraid of me, and sometimes do just for the fun of it. | T | F |
| 15. I am sure I get a raw deal from the men in my life. | T | F |
| 16. I commonly wonder what hidden reason a man may have for doing something nice for me. | T | F |
| 17. My motto is "Never trust a man." | T | F |
| 18. Once in a while I cannot control my urge to harm a man. | T | F |
| 19. When a man is bossy, I take my time just to show him. | T | F |
| 20. I know that men tend to talk about me behind my back. | T | F |
| 21. Most men make friends because friends are likely to be useful to them. | T | F |
| 22. Men always seem to get the breaks. | T | F |
| 23. I can't help feeling resentful when I think of how easy men have it in life. | T | F |
| 24. There are certain men I dislike so much that I am inwardly pleased when they get into trouble for something they have done. | T | F |
| 25. When I look back at what's happened to me, I can't help feeling mildly resentful toward the men in my life. | T | F |
| 26. I don't seem to get what's coming to me in my relationships with men. | T | F |
| 27. At times I feel I get a raw deal with the opposite sex. | T | F |
| 28. I don't blame women for trying to get everything they can from men nowadays. | T | F |
| 29. Men irritate me a great deal more than they are aware of. | T | F |
| 30. If I let men see the way I feel, they would consider me a hard person to get along with. | T | F |

Turn the page for the scoring keys and interpretations for both men's and women's hostility scales.



Scoring Keys

Following is the scoring key for each of the two scales. Please score yourself by simply counting the number of items that you answered according to the key.

Hostility Toward Women Scale:	Hostility Toward Men Scale:
1. T	1. T
2. T	2. T
3. F	3. T
4. T	4. T
5. F	5. T
6. F	6. T
7. F	7. T
8. F	8. T
9. T	9. T
10. F	10. T
11. T	11. T
12. F	12. T
13. T	13. T
14. T	14. T
15. T	15. T
16. F	16. T
17. T	17. T
18. T	18. T
19. F	19. T
20. T	20. T
21. F	21. T
22. T	22. T
23. T	23. T
24. F	24. T
25. T	25. T
26. F	26. T
27. F	27. T
28. F	28. T
29. F	29. T
30. T	30. T

TOTAL
SCORE:

INTERPRETATIONS

Male Hostility toward Women

We have learned a great deal about male hostility toward women from our studies of convicted rapists, men from the general population and college students who have been rated on the hostility scale and other measures. In general, we find that age has little effect on hostility toward women, that men of higher socioeconomic status tend to score slightly lower and that married men usually score lower than do single men.

We also found that hostility toward women is closely related to certain attitudes and beliefs about women and sexuality. One of our most consistent findings, for example, is that men who score high on the hostility scale tend to believe that men and women are essentially adversaries in their sexual relationships with each other. As you might imagine, these adversarial attitudes can lead to feelings of loneliness, and we and our colleague Daniel Perلمان of the University of British Columbia have found that men who score high on the hostility scale do tend to be

Hostility: How you rate

Men

Your score on the Hostility Toward Women scale will range from 0 to 30. In our latest sample of 305 college men, the average score was 8.79. If you scored between 0 and 5 on this scale, you are below the 25th percentile, meaning that at least 75 percent of the men in our sample scored higher—more hostile—than you. If you scored between 6 and 11, you have an average score (the middle 50 percent of our sample). If you scored 12 or more, you rank above the 75th percentile, meaning that you scored higher than 75 percent of our sample. A score between 0 and 3 is considered low, between 3 and 11 is medium and 12 to 30 is high.

Women

Your score on the Hostility Toward Men scale will range from 0 to 30. In our latest sample of 278 college women, the average score was 7.57. If you scored between 0 and 2 on this scale, you are below the 25th percentile, meaning that at least 75 percent of the women in our sample scored higher—more hostile—than you. If you scored between 3 and 11, you have an average score (the middle 50 percent of our sample). If you scored 12 or more, you rank above the 75th percentile, meaning that you scored higher than 75 percent of our sample. A score between 0 and 3 is considered low, between 3 and 11 is medium and 12 to 30 is high.

A precautionary note

It is important to understand that our findings with respect to hostility between the sexes are quite new and will have to be confirmed in studies during the next several years. Accordingly, we caution you not to overinterpret your score on our hostility scale. The relationships we have found so far are not perfect predictors, so it would be unwise, for example, to

assume that you are overly hostile or sexually aggressive just because you scored 14 on the hostility scale. Instead, you should examine your own beliefs and behavior and decide for yourself whether you have a problem in this area. The scales are to be used as guidelines, and we hope that our findings will stimulate you to think seriously about the important problem of hostility between the sexes.

quite lonely and depressed and have low self-esteem. Why? We suspect it may be because lonely people usually are overly sensitive to signs of both friendship and rejection. A lonely man, therefore, might come on too strong with a woman who is only trying to be polite and cause her to shy away. The lonely guy might then overreact to this rejection, get angry and bring about further rejection by the woman. Thus, we have a vicious cycle in which the man becomes more and more hostile toward the women he seeks companionship from and so gets lonelier and lonelier.

Another consistent finding is that men who score high in hostility toward women tend to have traditional sex-role beliefs. That is, they believe that a woman should get married and rear a family, that a wife should never contradict her husband in public, that a woman should be a virgin when she marries and that men should pay for dates. Men with high hostility levels also tend to believe in various rape myths, such as the false belief that women enjoy being raped and that they are responsible for their rapes. Such attitudes, we believe, can lead to very negative behavior during sexual interactions with women. And some of the high-hostility men we have studied admit that they use various levels of force in their attempts to get women to have sex with them, and that they would be likely to do so again. Similarly, in our laboratory studies of aggression, we find that some high-hostility men get very angry when women reject them and subsequently use high levels of physical punishment when given the opportunity to retaliate.

Our research also suggests that hostility toward women might be related to the viewing and enjoyment of violent pornography by men. Although our results are preliminary, we have found that some men who score high on the hostility scale report that they find explicit depictions of rape sexually arousing and rate sexually violent videotapes more stimulating and enter-

taining than do men who score low on the scale. We and our colleague Arthur Gordon at the Regional Psychiatric Center, a federal hospital-prison in Saskatoon, Saskatchewan, have found that the relationship between hostility toward women and sexual arousal by depictions of rape is particularly strong in convicted rapists.

Our search for the causes of male hostility toward women has just begun, but one puzzling finding has emerged: Men who have been sexually abused as children score high on the hostility scale and are somewhat lonely. Since most research shows that the vast majority of those who sexually abuse children are men, it is not clear why men who experienced sexual abuse as children should be more hostile toward women. What we need to find out is whether these men were victimized by a man or a woman. This is only one of the many questions that we will address in our future research.

Female Hostility toward Men

Our study of female hostility toward men is in its initial stages, so we know less about it than we do about male hostility toward women. However, several of our findings with women parallel those with men. For example, there is little if any relationship between hostility and age or socioeconomic status, but married women, like married men, do tend to score lower on the hostility scale than do singles.

One of the more telling findings in this research comes from our colleague Susan Dickens at York University. In her study, the Hostility Toward Men scale was administered to various groups of Toronto women ranging from 18 to more than 60 years old. In all groups, the women who were most hostile toward men were those who most feared being raped and who were likely to believe that the average man would rape a woman if he could be assured of not being caught and punished. These fears and beliefs might explain why we

have found that women, like men, who score high in hostility also endorse adversarial sex beliefs and are somewhat lonely and depressed.

And finally, as with men, we find that women with low self-esteem score higher on the hostility scale. This is not surprising, since previous studies have suggested that people of either sex who are low in self-esteem tend to be lonely, somewhat hostile and to have problems in their relationships with others.

In conclusion, the problem of hostility between the sexes seems to be a serious one, affecting both men and women. In light of our findings implicating childhood sexual abuse as a potential cause of such hostility—at least among men—we are currently undertaking a large-scale study of adolescents who have been sexually victimized. And, based on the work of Dianne Garrels at York University, we already have a clue to what the link might be between childhood sexual abuse and later hostility. She has found that children who report that they have been abused often experience as much or more trauma from the aftermath of the disclosure as they did from the actual abuse. The family is thrown into turmoil, and the child may experience severe punishment from the abuser. It may well be that this trauma and turmoil may be at the root of the sexual hostility that subsequently develops.

It is our hope that in this, the International Year of the Child, we will see more research designed to deal with this most disconcerting problem. □

James V. P. Check is at York University in Toronto. Neil M. Malamuth is at the University of California at Los Angeles. Barbara Elias and Susan A. Barton are at the University of Manitoba in Winnipeg. For further details, write to Check at the Department of Psychology, York University, 4700 Keele St., Toronto, Canada M3J 1P3.